

DECO GLAZE



GraphicGlaze
Printed Glass
Splashbacks

DECO GLAZE™
Bespoke Manufacturers of Decorative Glass Surfaces



About Printing on Glass

GraphicGlaze is a novel and creative way to add texture and unique character to a design. Using a beautiful range of prints, GraphicGlaze enhances the appearance of any project.

All printing is done on a digital flatbed printer using special primers and UV ink formulated for printing onto glass.

The artwork is printed directly on the rear of the glass to achieve a vibrant image when looking through the glass.

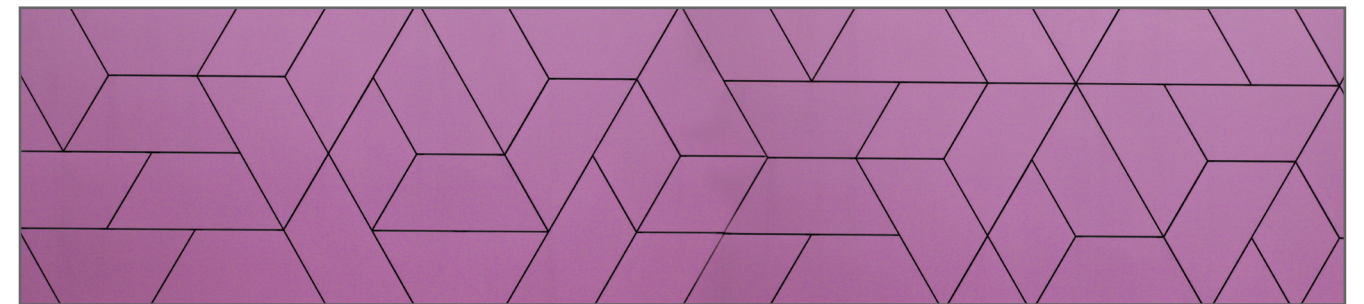
Artwork can extend over numerous panels but the largest single panel can be up to 3000 x 1800mm.

TECHNICAL SPECIFICATION:

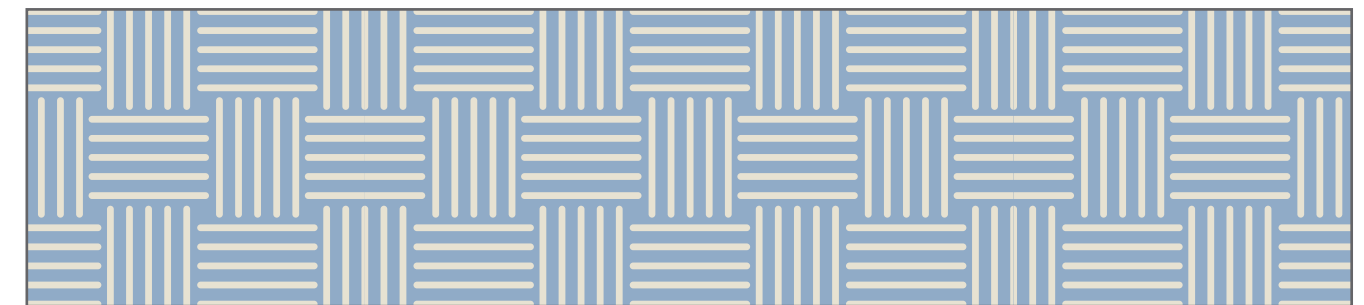
- Glass thickness: 6mm and 10mm
- Sheet size: 3000mm x1800mm
- Recommended Use: Splashbacks and worktops for Receptions, Boardrooms, Kitchens, Bathrooms, Bar Fronts and Tops, Wall Cladding, Leisure Centres and Gyms, Office desks, Hotels, and Restaurants
- Guarantee: 5 years against discoloration and delamination
- Choose an image from our collection or any image from www.stock.adobe.com or www.shutterstock.com
- Resistance: Non porous, heat shock resistant (up to 200°C), stain, acid, chemical and water resistant
- Buying Options: Available as supply only, full service or for collection from the Deco Glaze factory
- Splashback and Worktops are toughened
- 10-15 working days lead time
- Bespoke Options: Cut-outs and shapes are available
- Can be used in conjunction with DecoGlow light panels to create a stunning illuminated effect.

Patterns

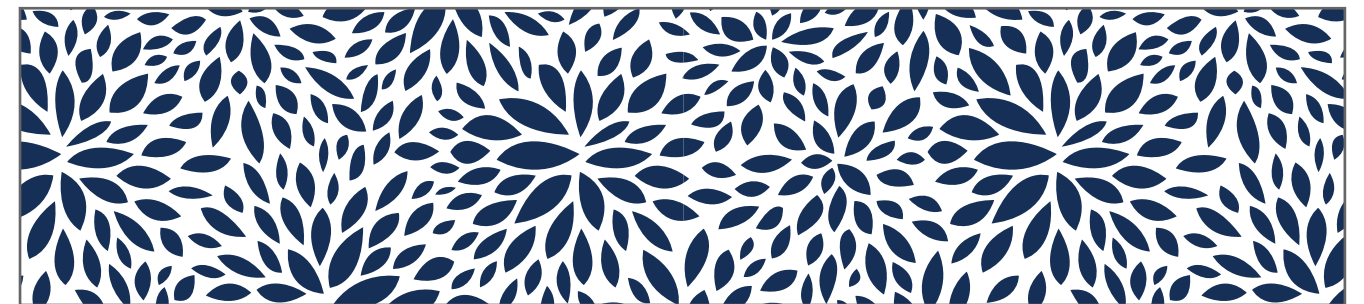
P031



P032



P033



P034



P035

